



The Rothen Group

Maintaining Britain's waterways



Plant & Work Boat Hire

therothengroup.co.uk
01827 215715

J N BENTLEY

Martin Dean, Site Manager

The Rothen Group have recently carried out work on several inland waterway projects for JN Bentley. Their knowledge has ensured that potential issues were highlighted early, meaning projects run smoothly and on programme. They have a large fleet of plant and operators too, which reassures that the work will be completed safely and with due care.

CANAL & RIVER TRUST

Wayne Moore, Reactive Response Team, London & Southeast Operations

We use The Rothen Group due to the variety of specialised crange and maintenance craft available, and the excellent level of customer service they provide.

Our **VERSATILE** fleet can be used across the country to facilitate all types of inland waterways whether it be for hire, marine contracting or operated plant.

We have a **PASSIONATE** team who strive for excellence; in the quality of workboats sent on hire, operating the boats; or delivering a civil engineering project.

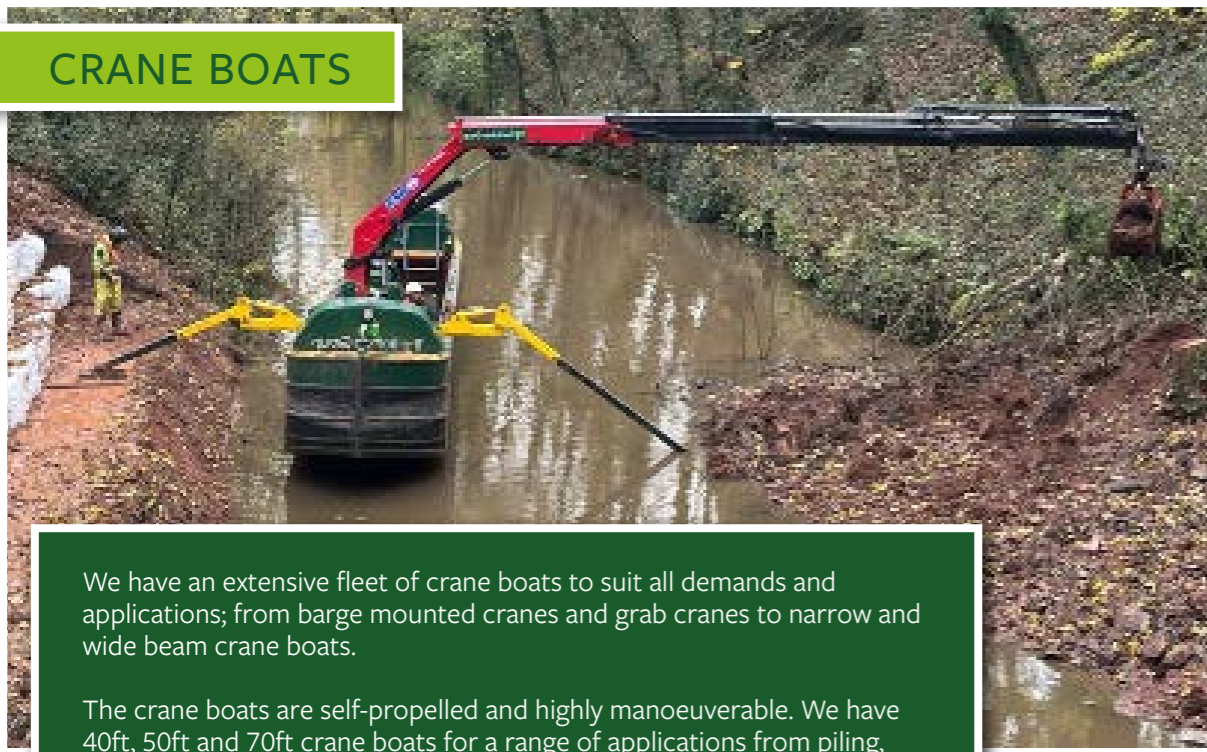
Our team of **EXPERT** engineers are able to provide 24hr response time to problems.

We pride ourselves on having a **PRAGMATIC** approach to projects and can advise clients on the best way forward for hires or contracts based on cost, time and outcome needed.

Our use of **INNOVATION** leads to delivery of your project; with potential to specially adapt pieces of kit, fabricated to suit your needs.



CRANE BOATS



We have an extensive fleet of crane boats to suit all demands and applications; from barge mounted cranes and grab cranes to narrow and wide beam crane boats.

The crane boats are self-propelled and highly manoeuvrable. We have 40ft, 50ft and 70ft crane boats for a range of applications from piling, nicospan, dredging or lock gate replacement works. There are a mix of seated controls for optimum visibility and usability, with electric controls to allow the crane to be controlled from a safe distance when loading heavy lock gates.

All our hiabs can be fitted with a variety of attachments from lifting hooks, clamshell buckets, piling hammers to post hole borers. Fitted with a range of hydraulic stabiliser and outrigger legs which create a stable working platform whatever the conditions on site, making them extremely versatile.

We have small, medium and heavy duty cranes, with the largest capable of lifting 8tonne and the maximum reach at 21m. All the crane boats have hydraulic stabiliser legs to create a stable platform for working. Some contain water tight skips for carrying materials, such as dredgings, concrete, clay etc.

The carrying capacities vary from 3tonne up to 20tonne to enable materials or plant to be transported to awkward access sites. These vessels can do the job of a dredger/piling boat, pusher tug & hopper, being able to load, remove and deliver materials to site and then discharge itself.

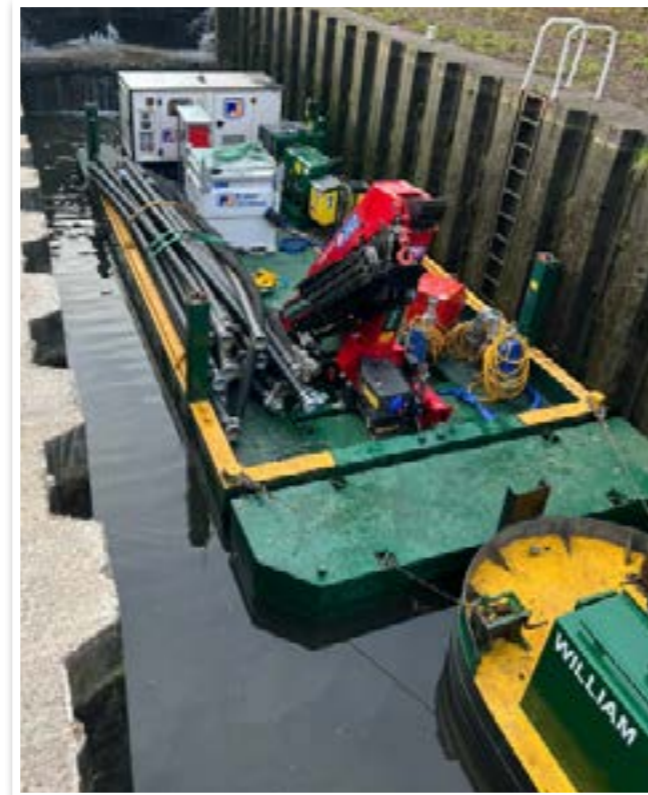


CRANE BOATS



CRANE PONTOONS

The crane pontoons are a highly versatile piece of kit. With cranes ranging in size from small, up to our hi-capacity crane capable of lifting 1.84 tonnes at 12.4m there is one for all applications. All are piped for third services and can be fitted with a clamshell or other attachments. There are various configurations including back and front tanks to increase the deck size when carrying equipment or materials to site.



CRANE PONTOONS

We have both narrow beam and wide beam crane pontoons to suit all canals and inland waterways. They are fitted with a small hydraulic power pack which operates the 4 stability legs creating an extremely stable working platform. The shallow draught of the pontoons make them ideal to work in shallow waters, but the stabiliser legs can enable working in water up to 5.5m.

The pontoons are modular which pin together and weigh c. 6 tonnes, with each module weighing no more than 1.6 tonne, giving a unit which is easy to transport and assemble via a Hiab lorry.

The pontoons are highly adaptable, with side stability sponsons which swing round to enable them to fit through narrow bridges and locks. The crane pontoons are able to transport and lift lock gates, making them ideally suited to lock replacement works as well as piling etc.

DIGGER PONTOONS

We have a range of specialist digger pontoons capable of transporting excavators up to 8 tonnes. These can either be narrow or wide and have four stability legs to create a stable working platform.

The diggers can be tracked up and down the pontoon with no risk of the pontoon capsizing. The pontoons have ramps to facilitate diggers and plant moving off the pontoon onto the bank, so can be a 'machine transporter' as well as a working platform. The plant can also be safely stored on the pontoon overnight on the offside.

The shallow draft of the pontoons also make them ideal to work in shallow waters and close to the banks creating the ideal craft for bank repairs, towpaths etc.

The pontoons are modular which pin together and weight c.6 tonnes with each module weighing no more than 3 tonnes giving a unit which is easy to transport and assemble via a hiab lorry.

The pontoons are highly adaptable, with side stability sponsons which swing round to enable them to fit through narrow bridges and locks. The diggers all have ROPS approved canopies for passing under low bridges to enable them to reach awkward access sites.



DIGGER PONTOONS

POWERED BOATS

The Rothen Group have an extensive range of powered workboats that can be used in a variety of applications.

Our powered workboats come in various lengths from 37ft up to 70ft. The hold space is ideal for carrying chippers, pumps, small plant, materials etc and can also have scaffold towers placed in them for inspections. Some of these powered workboats have removable floors so diggers up to 3 tonnes can be placed in the hold and track up and down the floor to work off the boat. These have hydraulic jack legs to create a stable working platform.

These craft have welfare and often tool storage so smaller items can be secured overnight without having to remove off site.

These boats can be hired with or without an operator. Depending on the type of boat required, transport is either via the waterway network or road (hiab or crane for the larger boats).



Several of our powered boats have welfare facilities and tools storage on board. This includes eberspacher heater, chemical cassette toilet, hand wash, microwave, kettle and seating for 3-4 people.

The Welfare Pod has a silent generator to run heater, drying room, chemical cassette toilet, hand wash, microwave, kettle and seat for up to 4 people. The Welfare Pontoon can be configured to take a range of welfare units or other items of plant. Sizes can vary from 2m x 8m to 7m x 8m and in between. Has jacklegs to create a stable platform with adjustable handrails to suit the welfare unit etc.



WELFARE BOATS

HOPPERS

The Rothen Group have a range of hoppers from 16ft to 70ft long which can accommodate all types of loads and work. Our popular 40ft materials hoppers are transportable by hiab lorry and can be stacked for more cost effective and fast mobilization. There are wide beam and narrow beam hoppers in a variety of lengths too.

Specialist hoppers have sealed, insulated internal tanks suitable for carrying hot tarmac or concrete to site where road access isn't possible.

There are shallow drafted and shallow sided hoppers as well as dredging hoppers with internal air tanks.

We have designed hoppers to be winched directly to crane boats, tugs or pontoons so they move through the locks as 'one boat' saving time. Carrying capacities range from 2.5tonne up to 60tonne depending on water depths and specific waterways.



DIGGER HOPPERS

These unpowered working platforms give the greatest working radius as the front has been designed to have a 3tonne digger working over the front as well as the sides. Metal floors enable the machine to work from an elevated position to maximise reach, whilst the digger is then tracked down into the bottom of the boat for transporting to ease getting under low bridges. Removable ramps also facilitate tracking the machine onto the bank.

The vessel measures 40ft x 6ft 10inches. It is fitted with a small hydraulic power pack which operates the four stability legs which makes it an extremely stable working platform.

PUSHER TUGS



PUSHER TUGS

The Rothen Group has an extensive range of wide and narrow beam pusher tugs.

The tugs are highly manoeuvrable with new low emission engines and specialist control panels for ease of use. Some have welfare and tool storage on board.

If depth is a consideration, shallow drafted tugs would be ideal; although small, they still have the pushing power for moving large hoppers. Their adjustable height propeller mean they are suited to congested areas where rubbish can become wrapped round your blade on deeper drafted vessels.

These boats can be hired with or without an operator and are transported via hiab or the waterway network.



REED & WEED

The Rothen Group are experts in all areas aquatic vegetation management

There are many different types of Aquatic Vegetation. Some float on the top, others grow from the bottom, some form thick rafts and others complex root structures or rhizomes. We know the importance of effective and versatile methods of aquatic vegetation management, preventing overgrowth and disruption of watercourses by native and invasive plant species.

WHATS INCLUDED IN OUR SERVICE?

Excellent **HEALTH & SAFETY** with trialed and tested lone working policy, trackers and emergency contact buttons. Dedicated **PROJECT MANAGER** who compiles weekly report to include statistics and photos. Liaison with client and other waterway users to provide **PROACTIVE** management of the waterway and operators.

Quick **MOBILISATION** from a range of trailers or hiabs to suit the site and facilities available.

PARACHUTE TEAMS to deal with emergency jobs.

SUSTAINABILITY through composting of aquatic weed and local depots for mobilisation. We have depots across the country which can receive the green waste.

LOCAL KNOWLEDGE with National coverage with experienced and trained operators who work with **COMMUNITIES** to achieve the best for the client.

COMPLETE PACKAGE available from free site visit to operated weed boats to managing disposal including: supplying tugs/hoppers and helmsman and disposing either for composting or other.



REED & WEED



TESTIMONIALS

KIER

Mike Ditch, Regional Project Manager

I have hired from The Rothen Group for a number of years and always found them to have a wide variety of kit suitable for our needs. The boats are always maintained to a high standard with all the stability calcs needed to ensure our teams can work safely and efficiently. They respond quickly and always offer great advice for which floating plant solutions are best for each project.

CPC CIVILS

Jim Walton, Contracts Manager

The Rothen Group have worked with us and supplied with marine, piling and fencing plant for many years. Their plant is well maintained, and their specialist operators are experienced and well trained. We have hired their crane plant, excavator pontoons and piling and fencing hammers. The team have excellent working knowledge of the UK canal system and are able to arrange for their plant to be delivered to all locations on the canals.



Plant Hire

Plant Trees

FOR EVERY BOAT **YOU** HIRE, **WE** PLANT A TREE

4500 trees and counting ...



YOUNG TREE ABSORBS
c.5.9kgs CO² / year



10 YR OLD TREE ABSORBS
c.22kgs CO² / year

DIGGERS



DIGGERS

A range of Kubota zero tail swing excavators, including 850kgs to 2.5tonne mini diggers up to 5 and 8 tonne midi diggers. Specially designed roll over cages for low access applications.

Marine ready bio-oil, LOLER certified machines fitted with drop control valves to ensure safe use for lifting operations such as piling, nicospan works etc. Can take all type of attachments.

HYDRAULIC PILING HAMMERS

TR1 for driving L8 sheets up to 2.4m in length TR2 for driving L8 sheets over 2.4m in length and for hard ground conditions.

Free hanging hydraulic impact piling hammers available in 3 sizes to fit excavators and cranes from 2.5 tonne upwards. These hammers can run directly from the machines hydraulic system or have a stand alone hydraulic power pack. Hammers are highly versatile and can be fitted with various inserts to suit your requirements for piles, posts, RSJs etc.

- No exhaust gas or oil
- Less vibration
- Biodegradable hydraulic oil
- Low cost of operation
- Easy to operate and maintain
- Adjustable hammer impact stroke / frequency
- Highly efficient
- No compressor needed
- Ideal hydraulic piling hammer for canal and river maintenance



AIR HAMMERS



ARG hammers are robust, versatile and easy to use. The ARG Air Hammers are the choice of waterways contractors as well as in canal / river restoration projects.

ARG Hammers are not only ideal for trench sheeting, they will drive light pile sections, H-Section columns, plastic piling, barrier posts, mooring and jetty scaffolding, steel tubes, and fencing posts, timber piles / posts.

The BSP 200 is a lightweight hammer for its size, offering a weight saving of 80kg yet delivering the same driving power as an ARG No 2. The BSP 300 is perfect for driving L8 and M7 piles in hard ground conditions, earning its popularity for working on the waterways.

BSP No 5 delivers a high speed sequence of impact blows ensuring efficient installation of the piles, and is usually used in non-cohesive soils. A periodic clamp grips the sheet at each strike reducing sheet damage to a minimum. This machine is effective in driving medium weight sheet steel, tubular, H-beam or timber piles. This machine is a good choice for driving Larssen Piles, as well as working with light concrete piles in soft soil, making it fairly unique in its capabilities.

The Atlas Copco 400 operates off a 125CFM compressor, the largest hammer of its kind to do so. It can also be used for tubes, posts, and H-Sections due to its wider leg guide option, and due to the impact being largely centered internally, is one of the quietest hammers in our range.

McKiernan-Terry hammers sit between the Atlas Copco 400 and BSP No 5, suitable to drive a light-medium sheet pile.

VIBRO HAMMERS

Dawson Construction Excavator Mounted Vibrators (EMVs) work in place of an excavator bucket to both drive and extract piles. These vibratory hammers form a productive and cost effective piling rig that works around a standard excavator.

- Compact, robust and reliable - no electrics
- Simple and fast attachment to the excavator
- Minimal height to maximise the pile length
- Slim design to drive single sheet piles
- High power to weight ratio
- Universal joint suspension for easy alignment of piles
- Extremely low vibration transmitted to the excavator
- Automatic hydraulic clamp operation
- Flexibility in application
- Flow regulator prevents excessive oil supply to vibrator
- Heavy saddles available for crane suspended models

The EMV70 will drive trench sheets, short lengths of steel piles, wooden posts, tubes and plastic piles, working off 5–12 tonne excavators. In between the EMV70 and EMV300 hammers, the EMV220 is only 5kg heavier than the smaller EMV70.

We would recommend it for jobs limited by the excavator size, perhaps with a heavier pile than a trench sheet.

At the other end of the scale, our largest vibrohammer is the EMV300. Powered by excavators between 13 and 25 tonne, this hammer is ideal for the Larssen range, or other mid-heavy duty piles.



FREE HANGING VIBRO HAMMERS

- Reduced noise levels
- Can drive and extract piles
- Own hydraulic power pack so they do not need to be plumbed into the crane's hydraulics
- Quick and easy installation and fitting
- Drives all types of piles
- No need for specialist inserts



HYDRAULIC POST DRIVERS

We have a range of hydraulic post drivers for hire to suit machines from 1.5 to 5 tonne. Specialist driving caps can be fabricated to suit individual applications. Especially suited to driving posts for the installation of nicospan and coir rolls.



Atlas Copco Hydraulic Post Driver 1 (PD1) & power packs.

These are small, hand held post drivers which provide powerful, high speed driving for a range of posts.

The PD1's can drive posts and tubes for a variety of applications from signposts, fencing and solar panel supports. These are also especially suited to driving posts for the installation of nicospan and coir rolls.

The PD1's are supplied with a hydraulic power pack.



HYDRAULIC BREAKERS

We have a range of hydraulic breakers suitable for different applications.

- The SD21 can be mounted on machines from 1 to 3 tonne.
- The SD22 can be mounted on machines from 3 to 4.5 tonne.
- The SD23 can be mounted on machines from 4 to 6 tonne.

JCB BEAVER PACK

The modern alternative to pneumatic breakers for asphalt and concrete. This mobile, heavy-duty breaker combines high-performance with low operator fatigue. It is a vibration damped breaker, ensuring comfort for the user. It has a 6m detachable hose. Will break up to 300mm. Powered by small petrol engine power pack. These can also have a post driver attachment fitted to them.



TRACKED DUMPERS



We have a full range of tracked dumpers from 0.5 tonne up to 9.5 tonne. All of our dumpers are fitted with bio-oil as standard.

Available in standard and swivel tip, with fold down ROPS to enable access in height restricted areas and have low ground bearing pressure tracks.



The Rothen Group

Maintaining Britain's waterways

CRANE BOATS / PONTOONS / TUGS & WORKBOATS / PLANT

therothengroup.co.uk | 01827 215715 | hire@therothengroup.co.uk